

# ASPLUND

STOCKHOLM



PAUSE by Broberg & Ridderstråle 2024

EMBRACING *Swedish* MINIMALISM



TATI console 120 by Broberg & Ridderstråle  
PALAIS coffee table by Anya Sebton & Eva Lilja Löwenhielm



LUC by Broberg & Ridderstråle

## ABOUT US

Our world is created with a mix of design, art, colours, materials and function, and in a vision of making desirable long lasting products for domestic and public spaces. The balance between good design, quality, proportions and playfulness makes the key to our style. During our three and a half decades story, ASPLUND has contributed to spread the inspiration of contemporary Swedish premium design products. Today our products can be found in homes, hospitality, lobbies, workspaces, museums etc around the world. This is our story, our present and our aimed future.

*Proud member of:*



European  
Cultural  
and Creative  
Industries  
Alliance





IRIS coffee table by Daniel Lavonius Jarefeldt  
WEB rug by Marie-Louise Hellgren



La Fabbrica, Riccardo Balli

Anish Kapoor  
Painting



## OUR COLLECTION

For over 30 years, we have worked with upcoming and renowned designers to create a collection of products that amplifies people's everyday life and has the aim to become future heirlooms.

The ASPLUND Collection fortés are cabinets, tables and carpets that are made to last, both in style and quality and are handmade or semi-handmade after order to avoid excess material and overproduction. We are committed to both ethical and environmentally sustainable production.





FRAME storage by Eva Lilja Löwenhielm & Anya Septon  
WEDGE rug by Marie-Louise Hellgren



MOCI table by Moa Sjöberg

## FINE MATERIALS COMBINED

Craftmanship, materials and techniques together with tradition have always been in focus. Combining materials and the knowledge that natural materials feel vivid and changes gracefully over time, has contributed to our approach of design. All materials and surfaces are certified and the most sustainable options are chosen. With these combinations ASPLUND´S signature style has shown the world that Swedish minimalism can be warm and elegant.





PALAIS ROYAL by Anya Sebton & Eva Lilja Löwenhielm  
PAGODA shelf by Broberg & Ridderstråle  
WOOLSILK rug







SNOW / SNÖ by Jonas Bohlin & Thomas Sandell



## MADE IN SWEDEN

ASPLUND remains determined and committed to keep most of our furniture manufacturing in Sweden. This way we are contributing to and invigorating the Swedish furniture industry as well as maintaining original core values of Swedish design and production.

## A SWEDISH CLASSIC

The Snow cabinet, designed by Thomas Sandell and Jonas Bohlin, launched in 1994 and has been in production in Sweden for 30 years and is considered by many as a Swedish design classic.

## STORAGE

An ASPLUND cabinet is just not any type of storage. It is so much more. We are meticulous to make storage where you can feel the quality in the surfaces and that gets better by everyday use. It should be the visual key piece in your home, lounge or office.

Depending on the type, style and intent of usage the cabinets are manufactured accordingly; By hand or semi-hand made but always in the best suited materials and surfaces.

We produce high quality storage for all types of spaces; Homes, lounges and high-end offices with the key parameters: ESTHETICS, FUNCTION, QUALITY & TIMELESS IDENTITY.





LUC DELUXE by Broberg & Ridderstråle  
GEMS SUMAK carpet by Damian Williamson





KILT OPEN & KILT by Cleasson Koivisto Rune









## CARPET COLLECTION

ASPLUND CARPETS are born out of our passion to combine premium art and design products. Designed by skilled designers with mix of international and Swedish contemporary style, using ancient Indian & Turkish techniques creating an inspiring modern twist. Our carpets are made by hand and we have developed a wide range of different techniques to fulfill the needs in various interior spaces.

Only the finest and most durable materials are good enough.



GRADIENT rug by Mattias Stenberg



TATI desk by Broberg & Ridderstråle  
FISH rug by Thomas Sandell



## PROJECTS

A selection from recent years ...



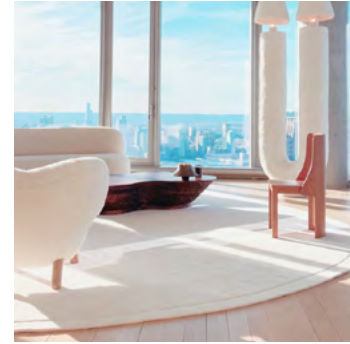
Nationalmuseum – Stockholm



Deichman Bibliotek – Oslo



Deichman Bibliotek – Oslo



Representation apartment – New York



Marina One showflat – Singapore



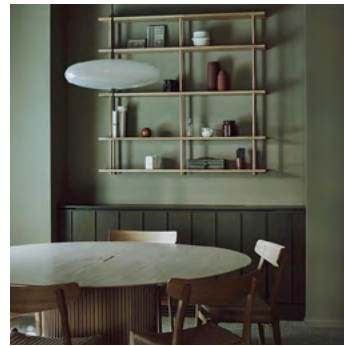
Private residence – Stockholm



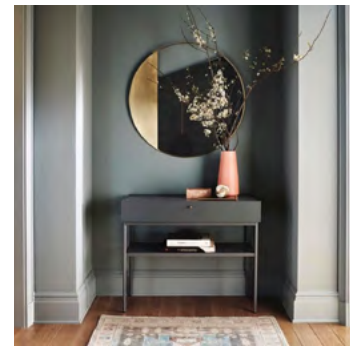
Mono Apartments – Stockholm



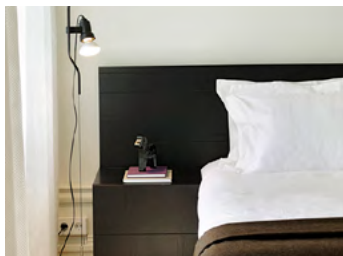
Retail interior – Stockholm



Summit House, coworking – London



ELLE Decoration cover – USA



Skeppsholmen Hotel – Stockholm



Hard Rock Hotel – Davos



Hard Rock Hotel – Davos



**archiproducts**  
DESIGN AWARDS  
—  
WINNER 2018





# ASPLUND AWARDS 1995 – 2024

## SWEDEN

**ELLE Decoration** LIGHT TRAY by Rybakken & Engesvik.  
BERMUDA by Thomas Eriksson. TATI by Broberg & Ridderstråle.  
FLEUR by Broberg & Ridderstråle. FILE by Jessica Signell  
Knutsson. BIBLIOTEKET by Emma Olbers.

**RESIDENCE** VASS by Claesson Koivisto Rune. TATI by Broberg  
& Ridderstråle. CARDS by Andersson Voll. HORIZON by Mattias  
Stenberg. PALAIS by Anya Sebton & Eva Lilja Löwenhielm.  
ASPLUND – Producer of the year.

**PLAZA** LUC by Broberg & Ridderstråle. FRAME by Anya Sebton  
& Eva Lilja Löwenhielm.

**SKÖNA HEM** TATI by Broberg & Ridderstråle. PALAIS by Anya  
Sebton & Eva Lilja Löwenhielm

**ÅRETS RUM** XI by Pia Wallén. BESSON by Broberg &  
Ridderstråle.

**EXCELLENT SWEDISH DESIGN** KNUX blanket by Pia Wallén.  
WEDDING STOOL by Thomas Sandell. AIR bench by Thomas  
Sandell. ARC table by Claesson Koivisto Rune. BERMUDA table  
by Thomas Eriksson.

## INTERNATIONAL

**BO BEDRE** LIGHT TRAY by Rybakken & Engesvik. CARDS by  
Andersson Voll.

**RED DOT AWARD** CODE by Ola Wihlborg. BERMUDA by Thomas  
Eriksson.

**WALLPAPER** TATI by Broberg & Ridderstråle

**ARCHIPRODUCTS** PALAIS by Anya Sebton & Eva Lilja  
Löwenhielm.

**NYC X DESIGN** PALAIS by Anya Sebton & Eva Lilja Löwenhielm.

**GOOD DESIGN AWARD** MOCI by Moa Sjöberg.

**THE INTERNATIONAL DESIGN YEARBOOK** GOLDEN SECTION  
by Claesson Koivisto Rune. O by Matz Borgström. CRISS CROSS  
by Michael Sodeau. X5 by James Irvine. Ruggles Carpet, DOT by  
Pia Wallén. CRUX by Pia Wallén. MAZE by Tom Dixon. KRICKAN  
by Kristina Råström. CARPET ON CARPET by Jonas Bohlin.  
CAROUSHKA by Carouschka Streiffert. PLUTO'S EYES by  
Stefano Giovannon.



FOR SPECIFIC REQUESTS PLEASE CONTACT US

**Projects**  
contract@asplund.org

**Becoming a retailer**  
trade@asplund.org

**Press**  
press@asplund.org

**CEO** Thomas Asplund  
thomas@asplund.org



ASPLUND

Sibyllegatan 31, 114 42 Stockholm | @asplundcollection | info@asplund.org | www.asplund.org